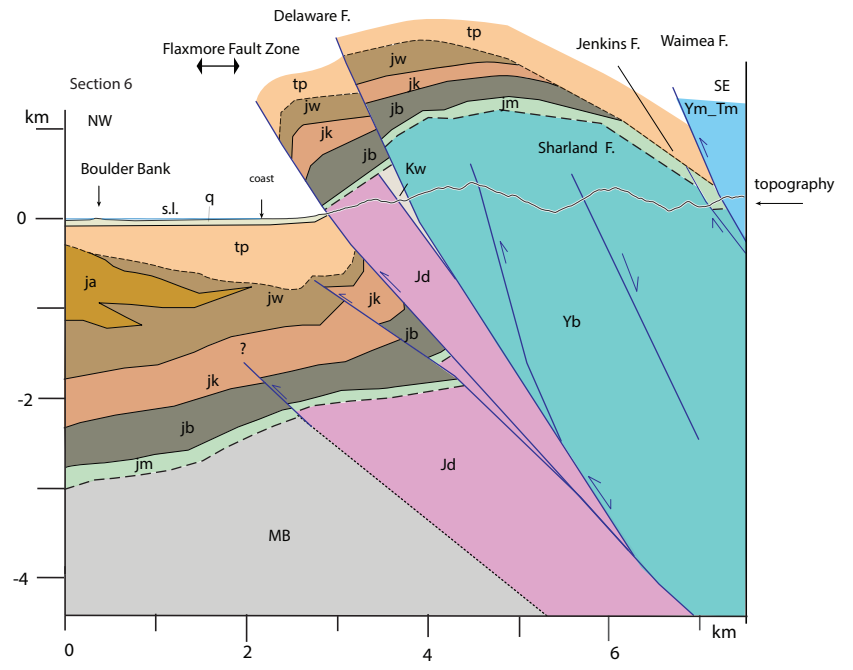
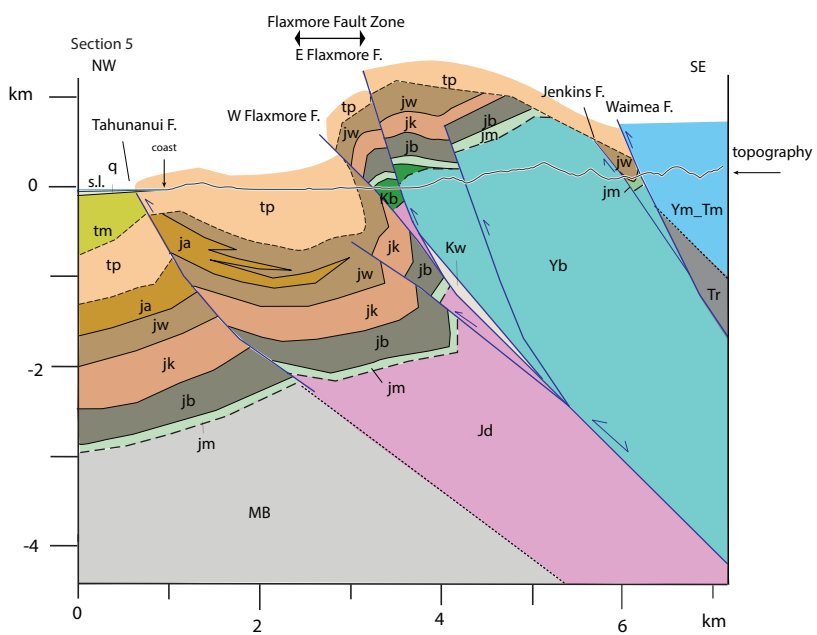
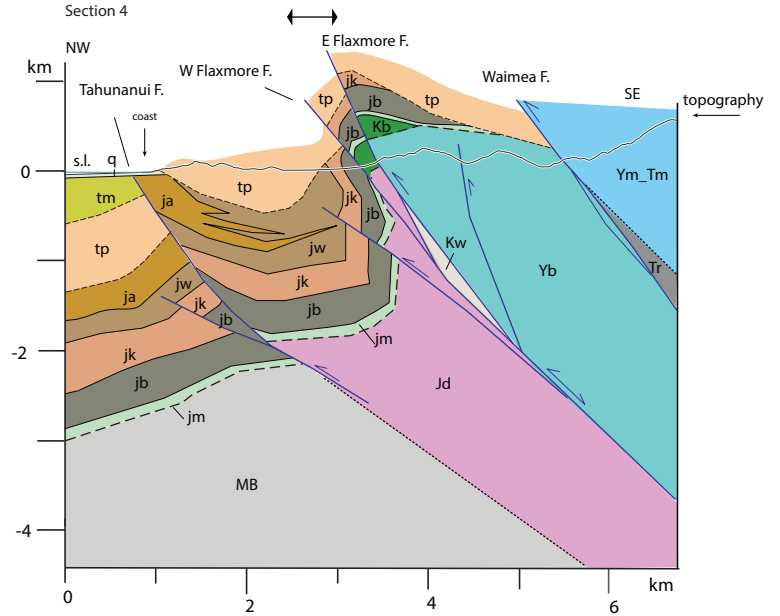
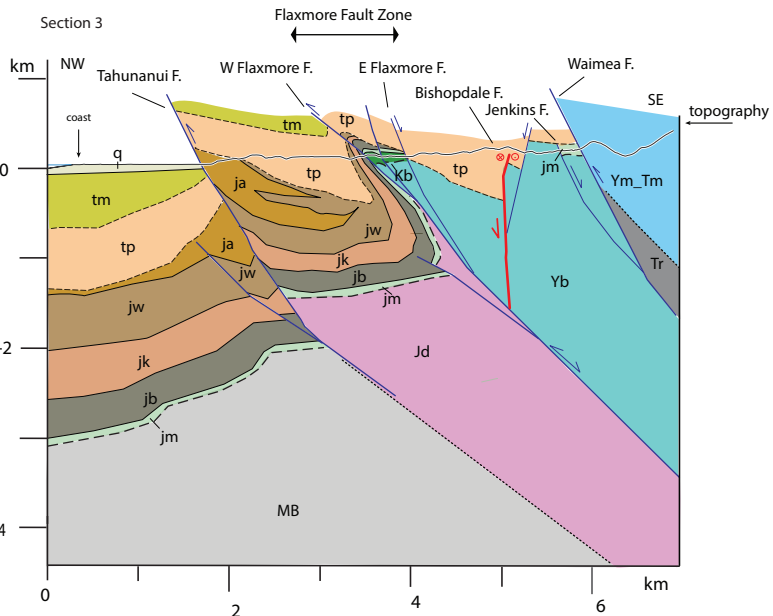
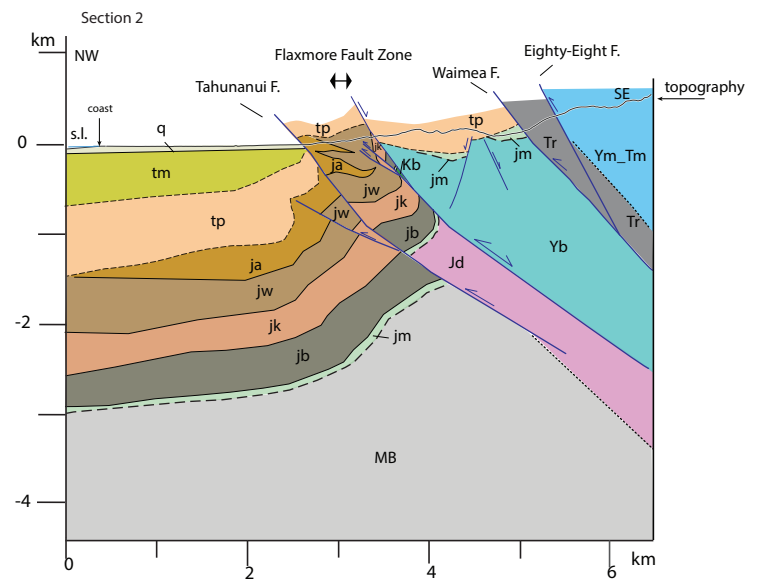
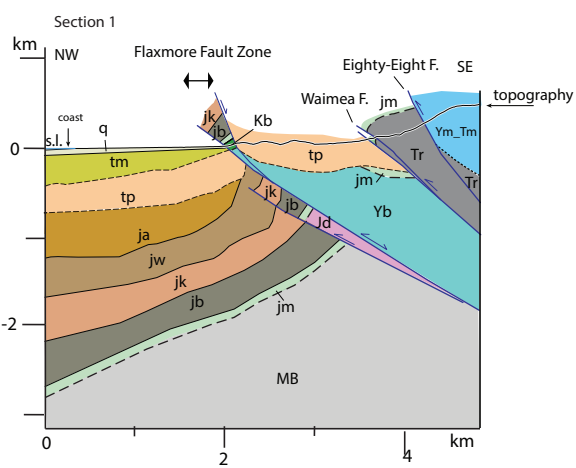


# CROSS SECTIONS OF THE REVISED GEOLOGICAL MAP OF THE NELSON-RICHMOND URBAN AREA

M. Johnston, F. Ghisetti, P. Wopereis (v3-2022)



## SEDIMENTARY COVER SEQUENCE

Tadmor Group

- q Undifferentiated Quaternary cover
- tm Moutere Gravel -- Nukumaruan (Wn)-Castlecliffian (Wc)
- tp Port Hills Gravel -- Waiauian (Sw)-Opoitian (Wo) unconformity

Jenkins Group

- ja Magazine Point Fmt. -- Whaingaroan (Lwh)-Otaian (Po)-Altonian (PI)
- jw Wakatu Fmt. -- Whaingaroan (Lwh)-Waitakian (Lw)
- jk Kawai Fmt. -- Runangan (Ar)-Early Whaingaroan (Lwh)
- jb Braemar Fmt. -- Kaiatan (Ak)
- jm Marsden Fmt. -- Kaiatan (Ak)-Runangan (Ar)

- Fault
- Kb Bishopdale Conglomerate (late Early Cretaceous?)

## BASEMENT TERRANES (EASTERN PROVINCE)

- Dun Mountain-Maitai
  - Ym-Tm Maitai Group  
Dun Mountain Ophiolite
- Murihiku
  - Tr Richmond Group
- Brook Street
  - Yb Brook Street Volcanics Group
- Drumduan
  - Kw Wakapuaka Phyllonite
  - Jd Drumduan Group
- MB Median Batholith

